

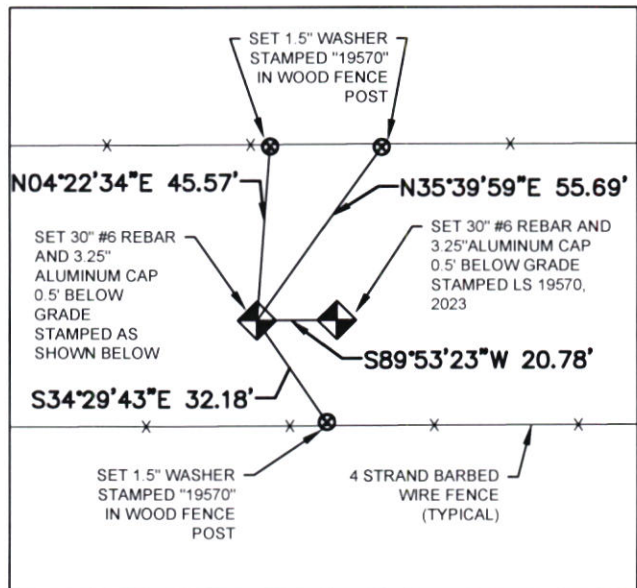
# State of Wyoming Corner Record

(In compliance with the CORNER PERPETUATION AND FILING ACT, Wyoming Statutes, 2013 Section 33-29-901 through 33-29-910, and the Rules and Regulations of the Board of Professional Engineers and Professional Land Surveyors)

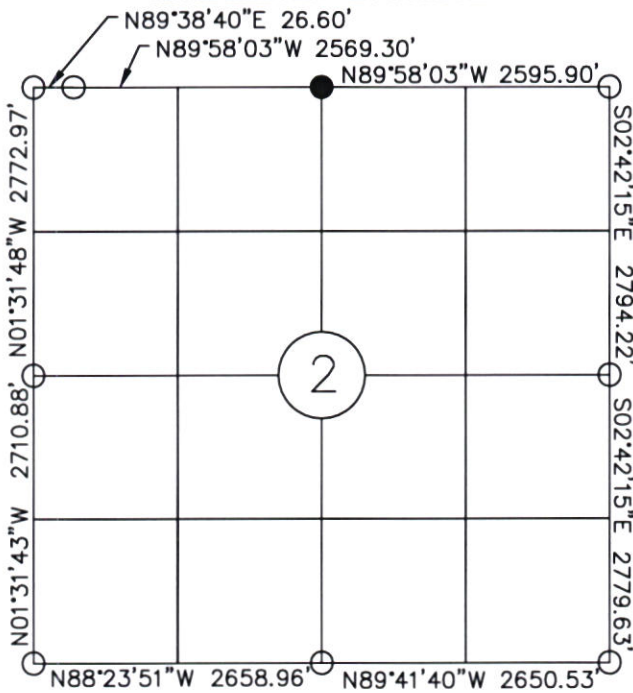
Reverse side of this form may be used if more space is needed.

Record of original survey and citation of source of historical information (if corner is lost or obliterated). Description of corner monumentation evidence found and/or monument and accessories established to perpetuate the location of this corner. Sketch of relative location of monument, accessories, and reference points with course and distance to adjacent corner(s) (if determined in this survey). Method and rationale for reestablishment of lost or obliterated corner.

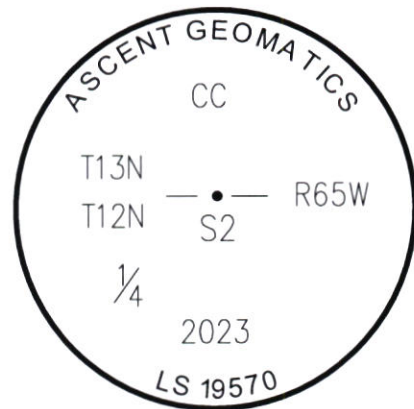
FOUND: N/A  
 SET: 30" #6 REBAR AND 3.25" ALUMINUM CAP  
 0.5' BELOW GRADE  
 STAMPED AS SHOWN BELOW  
 TIES: SEE LOCATION SKETCH FOR TIES



### Monument Location



### Location Sketch

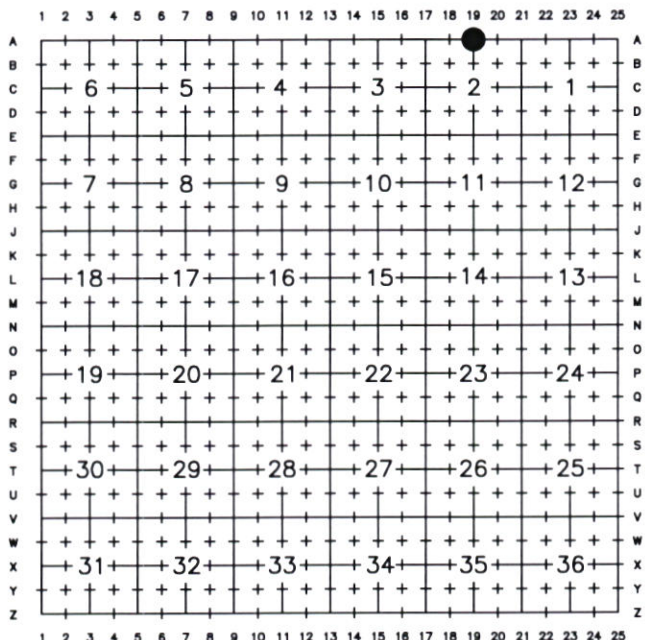


### Monument Inscription

Date of Field Work: 9/13/2023

Office Reference: B23.KIMH.0008

### Cross Index Plat

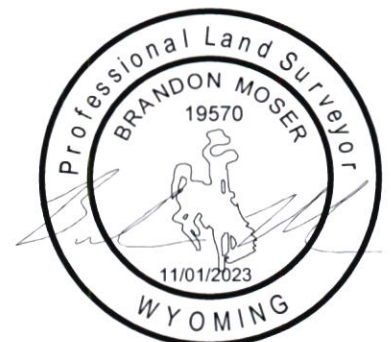


Firm/Agency, Address

BRANDON A. MOSER  
 ASCENT GEOMATICS SOLUTIONS  
 8620 WOLFF CT  
 WESTMINSTER, CO 80031  
 (303) 928-7128

This corner record was prepared by me or under my direction and supervision.

**SEAL & SIGNATURE**



RECP #: 866622  
 RECORDED 12/8/2023 AT 10:45 AM BK# 2860 PG# 48  
 Debra K. Lee, CLERK OF LARAMIE COUNTY, WY PAGE 1 OF 1

Corner Name QUARTER CORNER Section 2, T 12 N, R 65 W

Cross-Index No.: 19-A

County: LARAMIE

WBPEPLS/PLSW: March 1994; PLSW January 1998, January 2019